

INDUSTRIEVERBAND GARTEN E. V. (IVG)

GÜTEGEMEINSCHAFT SUBSTRATE FÜR PFLANZEN E. V. (GGS)

EVALUATION OF GERMAN GROWING MEDIA PRODUCTION FOR CONSUMER AND PROFESSIONAL USE IN 2025

DÜSSELDORF | MAY 2026







SALES FIGURES FOR GROWING MEDIA PRODUCED IN GERMANY IN 2025

GERMAN SALES OF GROWING MEDIA 2025

 **7.9 million m³**

RETAIL

PROFESSIONAL

	4.1 mio. m ³	1.7 mio. m ³
	0.9 mio. m ³	1.2 mio. m ³



GENERAL INFORMATION ON SALES FIGURES 2025

- 🌿 Our members sold 7.9 million m³ of substrates (growing media) from German production sites in 2025 (in 2024 the value was identical).
- 🌿 The main sales were done in the German market. Around 4.1 million m³ for the retail sector and 1.7 million m³ of growing media for the professional sector were sold.
- 🌿 In addition, about 2.1 million m³ of substrates were exported.
- 🌿 The production includes around 1.7 million m³ of peat-free substrates (1.5 million m³ in the hobby sector and 200,000 m³ for commercial horticulture).
- 🌿 The share of peat-free products in the consumer sector (total) has increased to 30 % (2024: 23 %). In the professional sector it is at 7 %.

USE OF RAW MATERIALS IN THE PRODUCTION OF GROWING MEDIA IN GERMANY

IN 2025



GENERAL INFORMATION ON PEAT USE IN THE GERMAN GROWING MEDIA PRODUCTION IN 2025

- In absolute terms, 4.3 million m³ of peat was used for growing media production in Germany in 2025.
- In addition, there were 4.4 million m³ of other organic and 0.3 million m³ of mineral raw materials used.
- The proportion of peat in growing media for the consumer market (average for Germany) stayed at 33 %.
- The proportion of peat in growing media for the German market is 61 % after a value of 65 % in the previous year.
- 43 % of the peat used is RPP-certified (2024: 49 %).



EMISSIONS FROM PEAT USE IN 2025

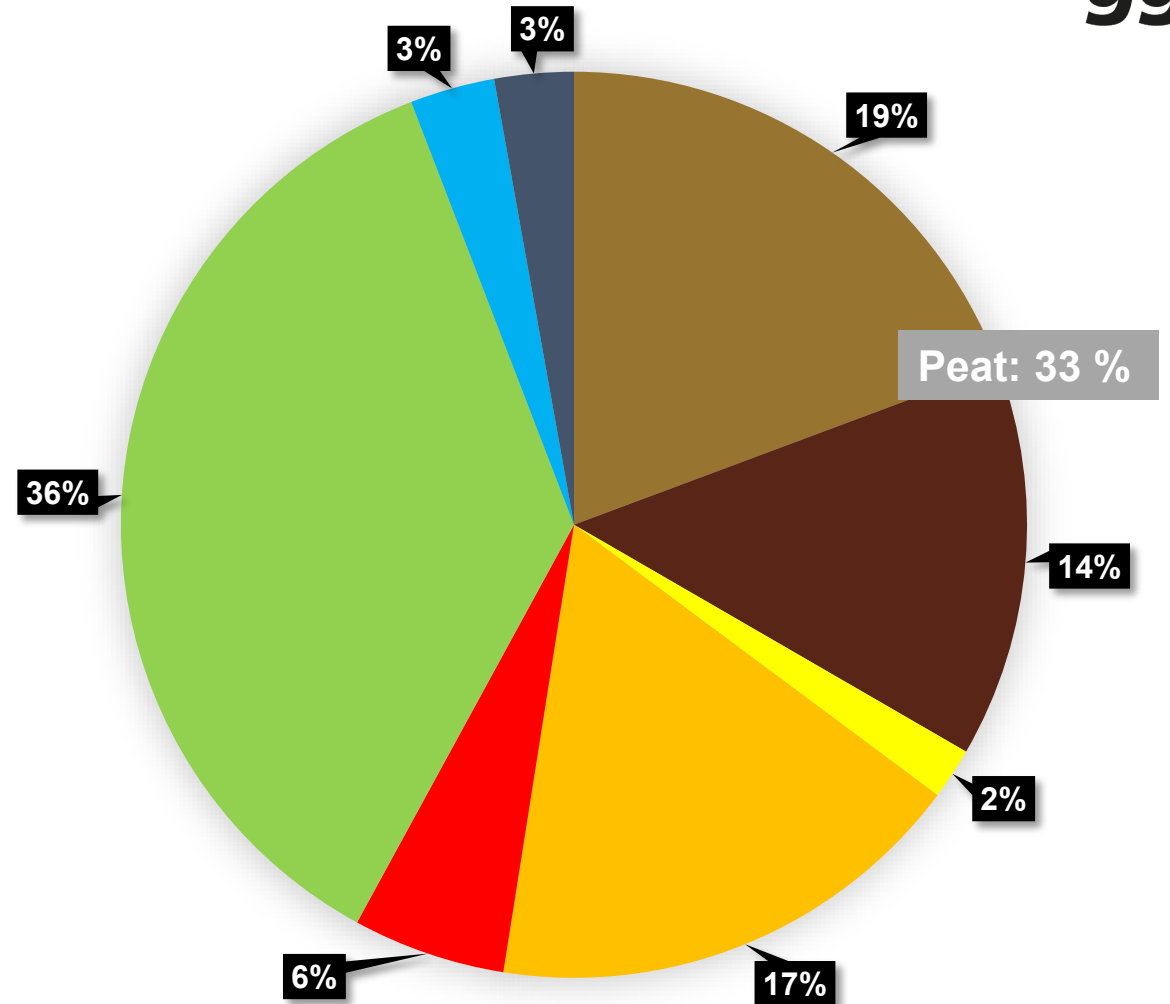
- 🌿 A small portion of emissions originates from the extraction sites ("on-site"), while the larger portion is released over time during the horticultural use of the peat through oxidation ("off-site").
- 🌿 For the calculation of "off-site" peat emissions, the entire quantity of released greenhouse gases is attributed to the year of extraction or production.
- 🌿 Emissions are accounted for according to the territorial principle, that is, in the country where the extraction takes place (UNFCCC, 2020).
- 🌿 The emission factors are 0.183 t CO₂-equivalents/m³ of peat for white peat and 0.2567 t CO₂-equivalents/m³ of peat for black peat.
- 🌿 In 2025, the use of peat in German substrate production (2.2 million m³ of black peat and 2.1 million m³ of white peat) resulted in a total theoretical GHG emission of approximately 0.95 million t CO₂-equivalents (2024: 1.03 million t). However, in this analysis, imported peat must be excluded, as it is already reported in the countries where the extraction took place.

GROWING MEDIA CONSTITUENTS FOR CONSUMER USE FOR THE GERMAN MARKET 2025

	Quantity in m ³
GREEN WASTE COMPOST	1.689.000
WHITE PEAT	900.000
WOOD FIBRES	810.000
BLACK PEAT	665.000
COMPOSTED BARK	253.000
COIR PRODUCTS (COCOPEAT)	85.000
OTHER ORGANIC CONSTITUENTS ⁽¹⁾	140.000
MINERAL CONSTITUENTS ⁽²⁾	131.000

(1) PINE BARK, WOOD, COMPOSTED WOOD AND FURTHER ORGANIC CONSTITUENTS

(2) PERLITE, FRESH CLAY, GRANULATED CLAY, EXPANDED CLAY, SAND, LAVA, PUMICE, LOAM AND OTHER MINERAL CONSTITUENTS

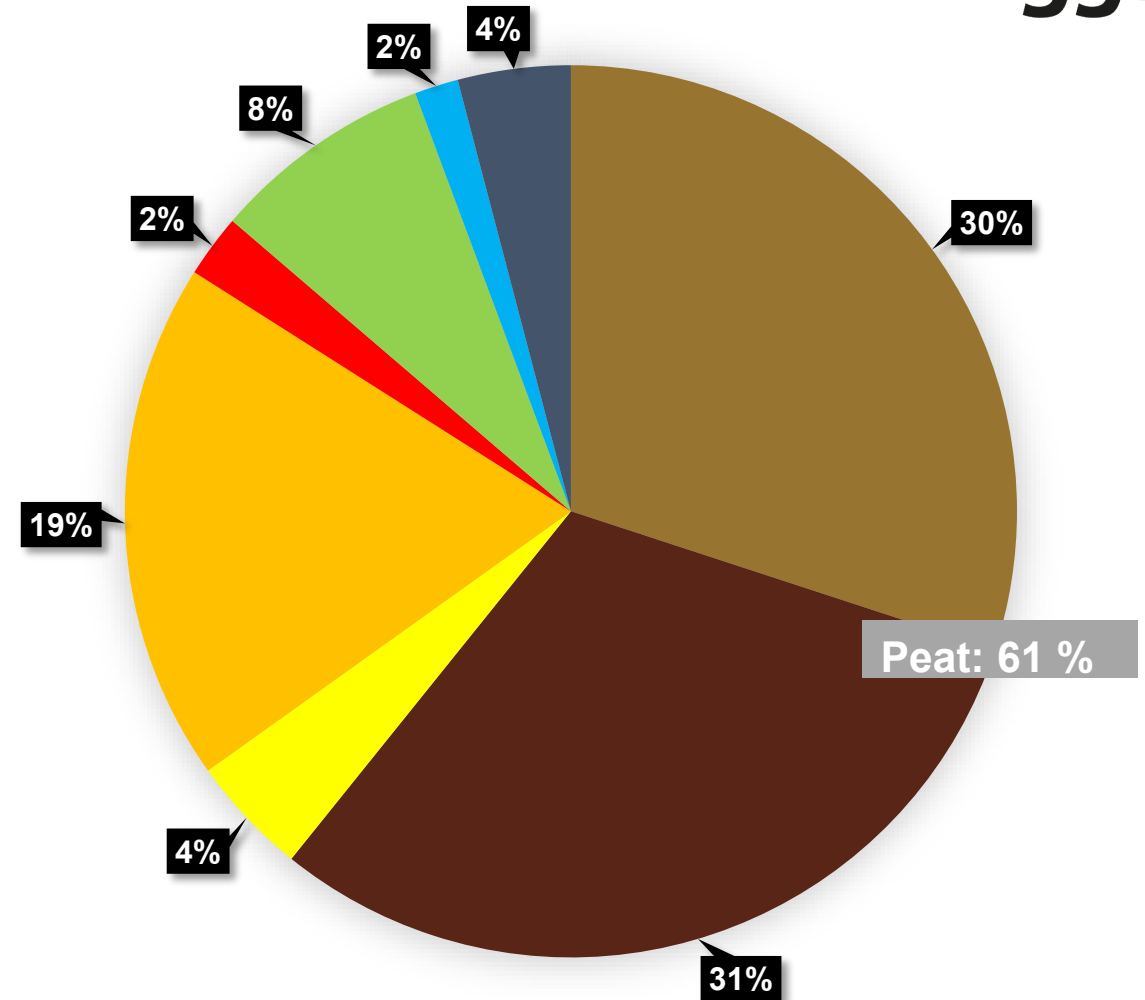


GROWING MEDIA CONSTITUENTS FOR PROFESSIONAL USE FOR THE GERMAN MARKET 2025

	Quantity in m ³
BLACK PEAT	653.000
WHITE PEAT	638.000
WOOD FIBRES	400.000
GREEN WASTE COMPOST	170.000
COIR PRODUCTS (COCOPEAT)	92.000
COMPOSTED BARK	49.000
OTHER ORGANIC CONSTITUENTS ⁽¹⁾	34.000
MINERAL CONSTITUENTS ⁽²⁾	87.000

(1) PINE BARK, WOOD, COMPOSTED WOOD AND FURTHER ORGANIC CONSTITUENTS

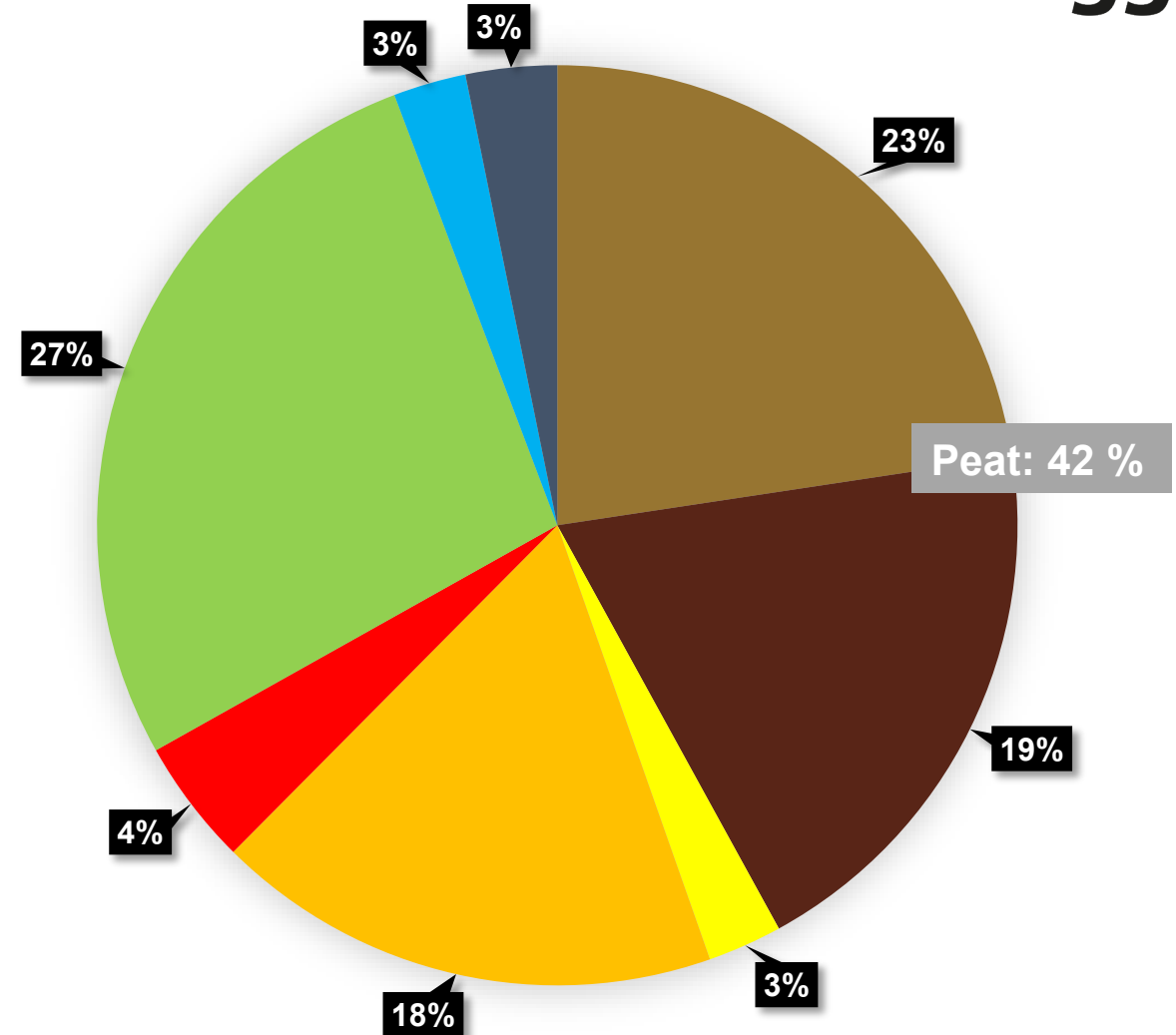
(2) PERLITE, FRESH CLAY, GRANULATED CLAY, EXPANDED CLAY, SAND, LAVA, PUMICE, LOAM AND OTHER MINERAL CONSTITUENTS



GROWING MEDIA CONSTITUENTS FOR CONSUMER & PROFESSIONAL USE FOR THE GERMAN MARKET 2025



	Quantity in m ³
GREEN WASTE COMPOST	1.859.000
WHITE PEAT	1.538.000
BLACK PEAT	1.318.000
WOOD FIBRES	1.210.000
COMPOSTED BARK	302.000
COIR PRODUCTS (COCOPEAT)	177.000
OTHER ORGANIC CONSTITUENTS ⁽¹⁾	174.000
MINERAL CONSTITUENTS ⁽²⁾	218.000
TOTAL*	CA. 6.796.000



(1) PINE BARK, WOOD, COMPOSTED WOOD AND FURTHER ORGANIC CONSTITUENTS

(2) PERLITE, FRESH CLAY, GRANULATED CLAY, EXPANDED CLAY, SAND, LAVA, PUMICE, LOAM AND OTHER MINERAL CONSTITUENTS

(*) DOES NOT 100% CORRESPOND TO SUBSTRATE SALES

CONTACT

INDUSTRIEVERBAND GARTEN (IVG) E.V.

WIESENSTRASSE 21 A1

D-40549 DÜSSELDORF

PHONE +49 211 909998-00

E-MAIL: VERBAND@IVG.ORG

HOMEPAGE: WWW.IVG.ORG

INFORMATION (GERMAN): [HTTPS://WWW.ERDEN-SUBSTRATE.INFO/](https://www.erden-substrate.info/)



- [Link: Position paper on further peat reduction \(April 2022\)](#)
- [Link: Clarification about peat use in substrates for the German market \(March 2024\)](#)